

SWINDON TOWN

FOOTBALL CLUB

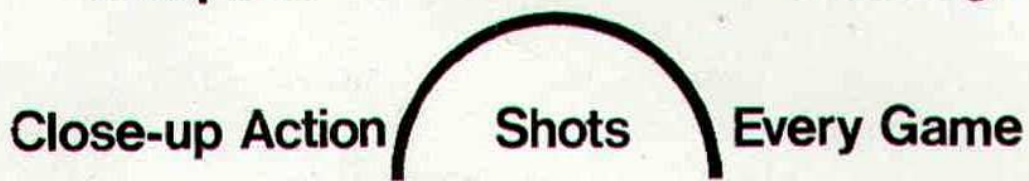
official programme



1/-



Complete Comprehensive Coverage



At home or away

The Evening Advertiser
has it covered

M^cILROYS

the Department Store
with that something extra *Service!*

Free

DELIVERIES
ESTIMATES ON CARPETS & CURTAINS
CARPET FITTING

WILLIAM McILROY (Swindon) LTD.

Tel. 5294



SWINDON TOWN FOOTBALL COMPANY LIMITED

Registered Office: COUNTY GROUND, SWINDON

President: Mr. W. J. CASTLE

Vice-President: Mr. J. DAVIES

Directors:

Chairman: Mr. H. E. LANE

Vice-Chairman: Mr. R. FRICKER

Messrs. F. L. COLLINGS, A. W. DONE, M. EARLE, C. J. GREEN, F. PLYER,
H. WILLIAMS, K. H. WILMER and Dr. J. NICHOLAS

General Manager: Mr. R. A. MORSE

Team Manager: Mr. F. FORD

TUESDAY, 3rd MARCH, 1970

Division II

SWINDON TOWN v PORTSMOUTH

Kick-off 7.30 p.m.

SWINDON TOWN	PORTSMOUTH F.C.	OFFICIALS
1 Downsborough	1 Milkins	REFEREE: Mr. C. I. Robinson (Manchester)
2 Thomas	2 Hand	
3 Trollope	3 Ley	
4 Butler	4 Davidson	
5 Burrows	5 Youlden	
6 Harland	6 Travers	
7 Smith	7 McCann	
8 Smart	8 Storrie	LINESMEN:
9 Horsfield	9 Hiron	Red Flag: Mr. J. J. Faulkner (Didcot)
10 Noble	10 Munks	
11 Rogers	11 Jennings	Yellow Flag: Mr. G. A. Tovey (Kidderminster)
12	12 Harris	
Colours: Red and White	Colours: Blue	

G. A. Streetly

Tobacconist and Confectioner

10 BOURNE ROAD
MOREDON SWINDON
Telephone 4956

C. Goodenough and Sons

Removal and Storage Contractors
any distance

25 Cricklade Street Swindon
Telephone 4555 and 3855

CECIL GREEN

Artistic Decorations in all its branches

12 Armstrong Street
Swindon Wilts
Telephone 4593

W. J. SELWOOD

Telephone Swindon 5884

Saddlery

General Leather Goods Manufactured and
Repaired to Your Individual Requirements

103 BROAD STREET
SWINDON WILTSHIRE

Notton's Cafe

COUNTY ROAD

200 yards from Ground

Perfect meals at all times

For High Class
Central Heating, Plumbing
Painting and Decorating
Electrical Installations
and Repairs

NORTH WILTS Sanitary and Heating Co. Ltd.

NEWPORT STREET SWINDON
Telephone 5373/4



THE ALCOHOL FUEL

COATE GARAGE

REPAIRS - OVERHAULS - WELDING
SERVICING - REBORING - TYRES

Props. E. V. & W. H. Mattick
Marlborough Road Swindon

Leese, Ing & Co. Ltd.

Mineral Water and
Squash Manufacturers

LANSDOWN ROAD SWINDON

Telephone 22744

Maylott Studios

For Group and Sports Photographs

Official Photographer to
Swindon Town Football Club

31 Faringdon Road

Telephone 22792

Always at your service

L. Bibby

For all Types — Rags, Iron and Metal, etc.
Spot Cash Paid. Please Telephone 2101
and our van will call.

THE PADDOCK ERMIN STREET
STRATTON ST. MARGARET

news & views

Yes, "The tumult and the shouting dies, the Captains and the Kings depart", or have they? The furore for tickets is over, and will probably be forgotten. I wonder shall we approach that figure of 27,500 again this season. Whatever one might feel this was undoubtedly the best ticket arrangement ever. Well planned and executed, there was no real need for anyone to queue.

Looking back over the past ten years, for its size, Swindon Town F.C. has been one of the most successful, and well run clubs in the country. Supporters will know that every so often the Football Association sends auditors and accountants to examine club books without any prior notice. This happened to Swindon a few weeks ago, although no publicity has been given. On completion of the task the men concerned were quite happy, and when asked if they wished to raise any query, or have any particular point explained, they merely stated, "No thank you", and then added, "This is the first club where we have not asked for an explanation of some kind". A great tribute to our office staff and auditors.

During the 1960's the Club has been highly successful. In the first three years came the build up with promotion in 1963. Unfortunately came relegation in 1965, but interest was well maintained.

It is still a surprise to many how soon we overcame that setback. A reorganised team, and a new manager, yet within a few weeks we were playing fast open attractive football, and enthusiasm rose, even talk of promotion. We finished in seventh position and obtained more points away from home than in any previous season.

Season 1966/67 saw the great Cup run, when we played no less than eight F.A. Cup games (three of them against Nottingham Forest), five League Cup matches and 46 Division 3 games. A great tribute to the fitness of the team, and training methods.

Season 1967/68 saw the team gradually moving to the top of the League, and great hopes of promotion, and again quite a good Cup run. Finally we were defeated, very unluckily, at Sheffield Wednesday.

Season 1968/69 was the finest ever in the history of the Club (probably of any club). The winning of the League Cup at Wembley, watched by millions of viewers all over the world, and finally the long sought after prize — promotion to Division 2.

Now the present — the problems at the beginning — a new manager, what challenges he had to face, and how quietly and positively he has carried out his tasks. Again a great Cup run into the 6th Round for the first time in over 45 years, and then losing to probably the finest team in the world today.

At the moment of writing Swindon occupy seventh position in the League, with twelve more matches to be played. The important thing is **seven** of the games will be played on the County Ground. Surely when the season ends we must be one of the contenders for the two important places.

Yes, some of the Captains and the Kings have gone, but we have much to look forward to — attractive teams, good football, plenty of interest and excitement.

THE GREAT WESTERN HOTEL

(OPPOSITE SWINDON RAILWAY STATION)

The business man's hotel with a top class
steak bar too!

Specialists in
LUNCHEONS and DINNERS
WEDDING PARTIES and RECEPTIONS
good food — quick service

J. ARKELL and SONS LIMITED Telephone SWINDON 22047

Mills and Merricks Limited

16-17 Bridge Street Swindon

Telephone 5365/6

"HOME OR AWAY"

our function is to ensure that your home is
tastefully and economically furnished

SWINDON'S COMPLETE HOUSE FURNISHERS

New City Office Supplies Limited

Office and Stationery Suppliers
to Industry and Commerce
6 Commercial Road Swindon
Telephone Swindon (STD Code 0793) 4605



CLARK BROS. (Swindon) LTD

Building and Civil Engineering Contractors

CONSULT US FOR
BUILDING AND CIVIL ENGINEERING
CONSTRUCTION IN ALL ITS PHASES

STRATTON ROAD

SWINDON

Telephone Swindon 27261

Supporters' Club Notes

Whilst supporters are, quite naturally, disappointed that the lads were unable to contain Leeds United, the advice given by a supporter writing in the local press is well worth following. In effect, his comments — and many others I have heard expressed — are as follows. Disregard the few knockers and concentrate on promotion to Division 1. All of us saw the lads fail against what is acknowledged to be the finest club team in Europe, let alone Division 1 of the English League. Many Leeds United supporters visited the Social Club after the match and they admitted to heaving a sigh of relief when the final whistle blew. Let us face facts. You have seen some very fine games of football this season, with the distinct possibility of more to come in the next few weeks. Let us concentrate on giving all the support we can. Starting against Portsmouth, tonight.

The Supporters' Club 32nd Annual Dinner and Dance is fast approaching. For those who have not yet made up their minds, here are the full arrangements:

Date? Wednesday, 11th March.

Where? McIlroy's Ballroom, Regent Street, Swindon.

Time? Dinner 7 p.m. for 7.30 p.m.; Dance 9.30 p.m. to 1 a.m.

Menu? Minestrone; Halibut au Gratin; Roast Beef, Yorkshire Pudding and Vegetables; Pear Hélène; Cheese and Biscuit; Coffee.

Music? Ken Kitching and his Band. (Dance music for all ages is Ken's speciality.)

Tickets? Dinner and Dance, 30/- each. Dance only, 7/6. Obtainable from Mrs. B. Ranger (Swindon 5158), our Social Secretary; any Committee member; at the bar of the Social Club; write to the Social Secretary, Medgebury Road, Swindon, or to the Hon. General Secretary, S.T.F. Supporters' Club, Social Club, County Ground, Swindon.

SPECIAL SALE NOTICE: Get your 1969/70 Supporters' Club Handbook today. Remaining stock is on sale at 1/6 per copy — half-price. Plenty of other items are for sale, in the Kiosk beside the Social Club, at normal prices.

Face in the crowd — is it you?



In all future editions of this Season's programme we shall publish a photograph of a small section of the crowd at a previous match, one member of which will be clearly indicated by means of a circle. This person will be entitled to a free seat at the next match on producing the programme at the office.

WE AIM TO PLEASE — TRY US

Tunleys

(1)

Glass (2)

Wallpaper (3)

Paint (4)

Polishes (5)

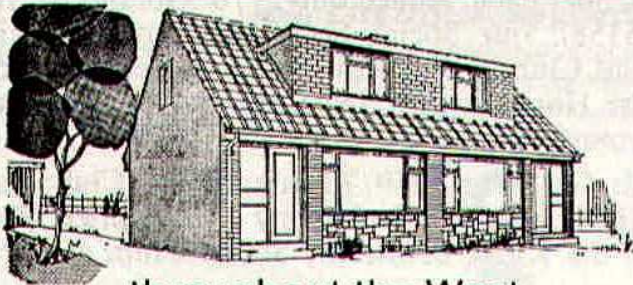
Artist Materials (6)

Prints (7) Ladders (8) Mirrors (9) Brushes (10) Aladdin Heaters (11)

MEMBERS OF THE



12/13 Gloucester Street Swindon Wiltshire



throughout the West

you will find Bradley Estates beautifully situated to meet the requirements of modern living. If you are thinking about a new home and would like to receive full details of our current and planned estates write now to 74 Victoria Road Swindon Wiltshire. Please send me details of

- Green Meadow Estate, Swindon, Wiltshire
- Nythe Estate, Swindon, Wiltshire
- Monkton Park Estate, Chippenham, Wiltshire
- Park Hill Estate, Frome, Somerset
- Damory Down Estate, Blandford Forum, Dorset
- Harkwood Farm Estate, Poole, Dorset
- Roman Way Estate, Bourton-on-the-Water, Gloucestershire

Name.....

Address.....



BRADLEYESTATES

our visitors



PORTSMOUTH F.C.

Pen Pictures Season 1969/70

JOHN MILKINS

Height 6ft. 0½ins. Weight 13st. 3½lbs. Born Dagenham, Essex. Voted by supporters the "Pompey Player of the Season 1968/69". He joined Portsmouth as a schoolboy and has been with the Club now about ten years. He was an England Youth International and represented Essex and London Schools.

RAY POTTER

Height 6ft. 0½ins. Weight 13st. 8½lbs. Born Beckenham, Kent. Ray joined Portsmouth for the start of the 1967/68 season as a cover for John Milkins. He is an experienced keeper, having been West Bromwich Albion's regular first-team selection for close on ten years.

GEORGE LEY

Height 5ft. 9ins. Weight 12st. 11lb. Born Exeter, Devon. Before joining Exeter, as a winger, George was on the books of Hitchen Town and Arsenal. Exeter most successfully converted him to a full-back.

TOM YOULDEN

Height 6ft. 0½ins. Weight 12st. 9lbs. Born London. Tom joined Arsenal as an apprentice in July 1964 and signed as a full-time professional in July 1966. He played regularly in the Gunners' Combination side before signing for Portsmouth at the start of the season. He was an England Schoolboy International.

MIKE TRAVERS

Height 5ft. 9½ins. Weight 11st. 2lbs. Born Blackwater, Berkshire. Signed from Reading in the close season of 1967. Mike has performed a number of roles for Portsmouth having been selected for the side as a defender, linkman and forward. Joined Reading as an amateur on January 7th, 1968. He represented Reading Schools.

RON TINDALL

Height 5ft. 11½ins. Weight 13st. Born Streatham, London. Signed as a player-coach Ron will be engaged primarily on coaching activities. Although he will be called upon to play should a team emergency arise or perhaps to do a specific job in a match. Ron is a fully qualified F.A. coach, beginning this aspect of his career back in the late 1950's.

RAY POINTER

Height 5ft. 9½ins. Weight 10st. 10½lbs. Born Cramlington, County Durham. An England International whilst with Burnley, Ray's ability is unquestioned. During the latter part of last season he played a midfield role for Portsmouth quite successfully. He has established himself as a firm favourite of the Fratton Park fans who voted him the first "Pompey Player of the Season" in 1967/68.

HARRY HARRIS

Height 5ft. 9½ins. Weight 12st. 3lbs. Born Magor, South Wales. Joined Portsmouth in 1958 from Newport County. Harry is a dependable and hard-tackling defender who makes full use of his experience. Last season Harry celebrated his tenth with Pompey with a bumper benefit — the climax being a match against Chelsea.

EOIN HAND

Height 6ft. Weight 13st. Born Dublin, Eire. Signed from League of Ireland club Drumcondra, Eoin has made tremendous strides in English League football. During the close season he was called upon and played as substitute for Eire in the World Cup qualifying competition. Whilst with Drumcondra he was selected as centre-half for the League of Ireland side that held a League of Scotland team to a 0-0 draw. He has established himself as a "regular" in the Portsmouth side.

Hatton's Newsagency

A. J. D. & N. J. Woodhouse

Newsagents :: Tobacconists
Confectioners

Agents for Wessex School of Motoring
Booking Agents for Rimes Coaches

6 REGENT CIRCUS (near G.P.O.)
Telephone Swindon 22731

BRETTS

PET and GARDEN SUPPLIES

32-33 Commercial Road
and
6 Cromwell Street Swindon

THE PORK SHOP

(Swindon Bacon Curing Co. Ltd.)

Specialists in

Bacon - Pork - Cooked Ham

50 FLEET STREET SWINDON
Telephone 22122

J. WILMER

Coal Merchants

St. Margaret's Road Swindon

Telephone 22535

SOUTHERN LAUNDRY CO. LTD.

Launderers and Dry Cleaners

HAYDON STREET SWINDON
Telephone 4161

At Your Service

A. E. LUDLOW LIMITED

Wholesale Fruit and Potato Merchant

COLBOURNE STREET
SWINDON WILTSHIRE
Telephone Swindon 3583

We deliver Fresh Fruit, Vegetables
and Potatoes daily—Wholesale Only

FOR ALL YOUR ANGLING NEEDS
CONSULT

Frank Woodward

Swindon's Fishing Tackle Specialist

25 HAVELOCK STREET SWINDON
Telephone 3879

For Paints of Good Quality

H. S. Hodges & Sons

(SWINDON) LTD.

Cricklade Road Swindon
Telephone 22422

Dulux, Brolac, Valspar, Wallcharm, etc.

24 hour Delivery
Service -

YOUR COMPLETE JANITORIAL SERVICE

Wilts Cleaning Supply Service

Kembrey Warehouse Rear 255 Cricklade Road
SWINDON

Telephone 21012

Represented by G. ALEXANDER
Telephone Swindon 27833

OUR VISITORS (continued)

MIKE TREBILCOCK

Height 5ft. 8ins. Weight 10st. 11½lbs. Born Gunnislake, Cornwall. Joined Portsmouth for a record club transfer fee of £40,000 from Everton. He has a powerful shot and ended last season as the Club's second highest goalscorer.

RAY HIRON

Height 6ft. 1½ins. Weight 11st. 2½lbs. Born Gosport, Hampshire. For the first time since joining Portsmouth from Hampshire League side Fareham Town, Ray topped the Pompey goalscorers' list last season with seventeen goals, which was also his highest single season's tally to date. Incidentally, seven of the goals were scored in three games.

BRIAN BROMLEY

Height 5ft. 8ins. Weight 11st. 4lbs. Born Burnley, Lancs. Signed from Bolton on 7th November, 1968. Brian made his first appearance for Portsmouth in a friendly against Chelsea. His first League game was at Fratton Park against Aston Villa. An industrious and constructive player who can split opposing defences with his intelligent use of the ball.

DAVID MUNKS

Height 5ft. 9½ins. Weight 11st. 8½lbs. Born Sheffield. Transferred from Sheffield United on the 19th May, 1969, for a fee in the region of £20,000. A strong midfield player, David played for Sheffield and Yorkshire boys and was an England Youth International.

ALBERT McCANN

Height 5ft. 6ins. Weight 11st. 7½lbs. Born Maidenhead, Berkshire. A strong and effective player, Albert has been among the goals for Pompey for a number of seasons now. Last season he played a midfield role on a number of occasions. He joined Portsmouth in 1963.

NICK JENNINGS

Height 5ft. 5½ins. Weight 9st. 12lbs. Born Wellington, Somerset. A ball-playing winger who is sharp and fast. He was transferred to Portsmouth in January 1967 for a then record club fee of £25,000. He has been a "regular" in the side since joining Portsmouth.

BRIAN TURNER

Height 6ft. 1in. Weight 12st. 7lbs. Born East Ham, London. Whilst in the New Zealand national side, Brian was advised by the team's coach, Ken Armstrong, the ex-Chelsea player, that he should try and break into English League football. He came to England a year or so back and signed for Chelsea. He secured a regular place in their Combination side and also played a number of first team friendlies. He was given a free transfer to Pompey and signed on 27th May, 1969.

ROGER DAVIDSON

Height 5ft. 7½ins. Weight 11st. 6lbs. Born Islington, London. An inside-forward turned midfield player, he signed for Arsenal as an apprentice professional and played for two seasons in the Gunners' Combination side. He signed for Portsmouth on a free transfer on Tuesday, 27th May, 1969. Roger represented Middlesex, London and England as a schoolboy.

GORDON NEAVE (Trainer)

Born Glasgow, Scotland. Joined Portsmouth as an inside-forward in the 1950's. Transferred to Bournemouth then to Aldershot with whom Gordon terminated his playing career. He became assistant trainer/coach at Fratton Park then promoted trainer. He is a qualified physiotherapist.

BOBBY CAMPBELL (Assistant Trainer/Coach)

Born Liverpool. Bobby has been assistant trainer/coach at Fratton Park since the beginning of the 1967/68 season. Previously, however, Bob was with Pompey for six seasons. He was originally with Liverpool but was transferred to Pompey in 1959/60 season after seven years with the Merseyside club. He left Portsmouth for one season with Aldershot before returning to take up his present post.

Division I I

Fixture List

1969

August

9 Blackburn Rovers	(A) 0—2
13 Cardiff City	(A) 2—2
16 Carlisle United	(H) 2—2
19 Cardiff City	(H) 2—1
23 Aston Villa	(A) 2—0
30 Charlton Athletic	(H) 5—0

September

2 League Cup (2) Swansea	(A) 3—1
6 Blackpool	(A) 2—3
13 Oxford United	(H) 0—0
16 Middlesbrough	(A) 0—0
20 Queen's Park Rangers	(A) 0—2
24 League Cup (3) Oxford	(A) 0—1
27 Leicester City	(H) 1—1
30 Millwall	(H) 2—1

October

4 Bolton Wanderers	(A) 1—0
7 Carlisle United	(A) 2—2
11 Sheffield United	(H) 2—1
18 Hull City	(H) 1—0
25 Portsmouth	(A) 1—3

November

1 Norwich City	(H) 2—0
8 Birmingham City	(A) 0—2
15 Watford	(A) 0—0
22 Huddersfield Town	(H) 2—1
29 Preston North End	(A) 1—3

December

6 Bristol City	(H) 1—1
13 Oxford United	(A) 0—0
20 Blackpool	(H) P
26 Aston Villa	(H) 1—1
27 Charlton Athletic	(A) 1—1

1970

January

3 F.A. Cup Blackburn	4—0
10 Queen's Park Rangers	(H) 0—0
17 Leicester City	(A) 2—0
24 F.A. Cup (4) Chester	(H) 4—2
31 Bolton Wanderers	(H) 3—2

February

7 F.A. Cup (5) Scunthorpe	(H) 3—1
9 Sheffield United	(A) 2—1
14 Blackburn Rovers	(H) P
21 F.A. Cup (6) Leeds	(H) 0—2
28 Hull City	(A) 1—1

March

7 Huddersfield Town	(A)
14 Preston North End	(H)
21 Bristol City	(A)
28 Watford	(H)
30 Norwich City	(A)
31 Birmingham City	(H)

April

4 Millwall	(A)
14 Middlesbrough	(H)

Appearances

Name	Div. II	League Cup	F.A. Cup	Cup Winners Cup
Downsborough	30	2	4	2
Thomas	30	2	4	2
Trollope	30	2	4	2
Butler	30	2	4	2
Burrows	29	2	4	1
Harland	30	2	4	2
Smith	16 (1)	2	4	2
Horsfield	29	2	4	2
Smart	30	2	4	2
Noble	27	2	3	2
Rogers	24	2	4	2
Jones	8 (5)		1 (1)	(1)
Blick	1 (4)			1
Heath	15 (1)			
Down	(1)			
Penman	1		(1)	

(Playing as substitute in brackets)

Goalscorers

Name	Div. II	League Cup	F.A. Cup	Cup Winners Cup
Horsfield	13		4	3
Noble	9	3	1	1
Jones	4		1	1
Rogers	6		1	
Smith	2		1	
Burrows	1			
Trollope	2			
Thomas	1			
Smart	2		1	
Butler			1	
Opponents	1			

League Table – Division II

(up to and including Saturday, 28th February, 1970)

	P	W	D	L	F	A	P
Huddersfield Town	33	19	8	6	52	30	46
Sheffield United	33	18	5	10	62	30	41
Cardiff City	33	15	10	8	53	34	40
Blackpool	32	15	10	7	45	38	40
Queen's Park Rangers	34	17	6	11	59	44	40
Swindon Town	31	12	13	6	41	33	37
Blackburn Rovers	31	16	5	10	42	36	37
Leicester City	32	13	10	9	47	40	36
Middlesbrough	30	14	7	9	39	33	35
Carlisle United	34	13	9	12	52	48	35
Bristol City	33	12	10	11	41	35	34
Millwall	33	9	13	11	38	46	31
Oxford United	33	10	11	12	29	33	31
Portsmouth	33	11	8	14	54	60	30
Birmingham City	33	10	9	14	44	53	29
Norwich City	32	11	6	15	49	55	28
Hull City	32	10	7	15	49	55	27
Bolton Wanderers	34	9	8	17	45	57	26
Watford	33	8	9	16	35	43	25
Preston North End	33	7	10	16	35	50	24
Charlton Athletic	32	5	13	14	27	57	23
Aston Villa	32	5	11	16	28	52	21

Forthcoming Matches on This Ground

SATURDAY, 7th MARCH, 1970

Football Combination

SWINDON TOWN v. BIRMINGHAM CITY

Kick-off 3 p.m.

TUESDAY, 10th MARCH, 1970

Division II

SWINDON TOWN v. BLACKBURN ROVERS

Kick-off 7.30 p.m.

SATURDAY, 14th MARCH, 1970

Division II

SWINDON TOWN v. PRESTON NORTH END

Kick-off 3 p.m.



Gary Sprake anxiously watches as this shot from Arthur Horsfield goes by the upright.

Photo by R. Marsh

The man in the middle

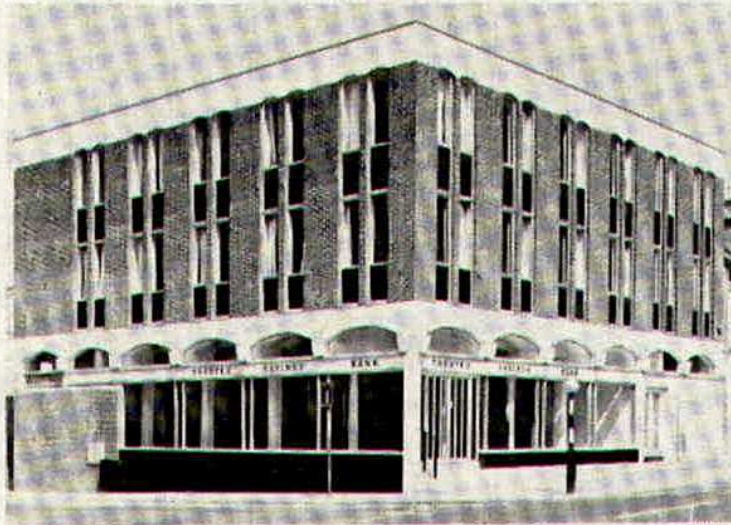


IVAN ROBINSON

Age 40. A transport manager, he began refereeing in 1946, progressing through local amateur leagues to the Lancashire Combination. Promoted to the Football League Referees list in 1966 after three years on the Linesmen's list. He had the dubious distinction of "scoring" the only goal of the match when a ball going wide cannoned off him and shot into the far corner of the net, in the Barrow v. Plymouth Argyle match last season.

T RUSTEE
S AVINGS
B ANK

93 Commercial Road
Swindon



Facilities include

- CURRENT ACCOUNT SERVICE
- 24 HOUR CASH DISPENSER
- T.S.B. UNIT TRUST
- CONTRACTUAL SAVINGS SCHEME
(giving substantial Tax benefits)

**INTEREST 7% IN THE
SPECIAL INVESTMENT DEPT.**

DON ROGERS SPORTS
29 FARINGDON ROAD SWINDON

Telephone 27378

Main suppliers to Swindon Town Football Club

Stockists of

All leading makes of Football Boots and Clothing
Table Tennis, Badminton, Rugby and Hockey equipment

IN FACT THE COMPLETE SPORTS OUTFITTER

RIMES of SWINDON
POPULAR EXCURSION TO

Sat., March 7th

HUDDERSFIELD Dept. 08.00 hrs.

Fare
adult child
33/- 22/-

SERVICE DIRECT TO THE GROUND
ALL SEATS NUMBERED AND RESERVED

Book now at

102 Commercial Rd., Swindon Telephone 27113 **46 Cricklade St., Cirencester Telephone 3479**

or with any of Rimes Booking Agents

Dobell Shearman & Co. Ltd.

HIGH STREET SWINDON

Telephone 4961

FANCY and COMMERCIAL STATIONERS
TYPEWRITERS and OFFICE EQUIPMENT

Greetings Cards for all Occasions
from Leading Art Publishers



W. J. CASTLE

Office and Bakery

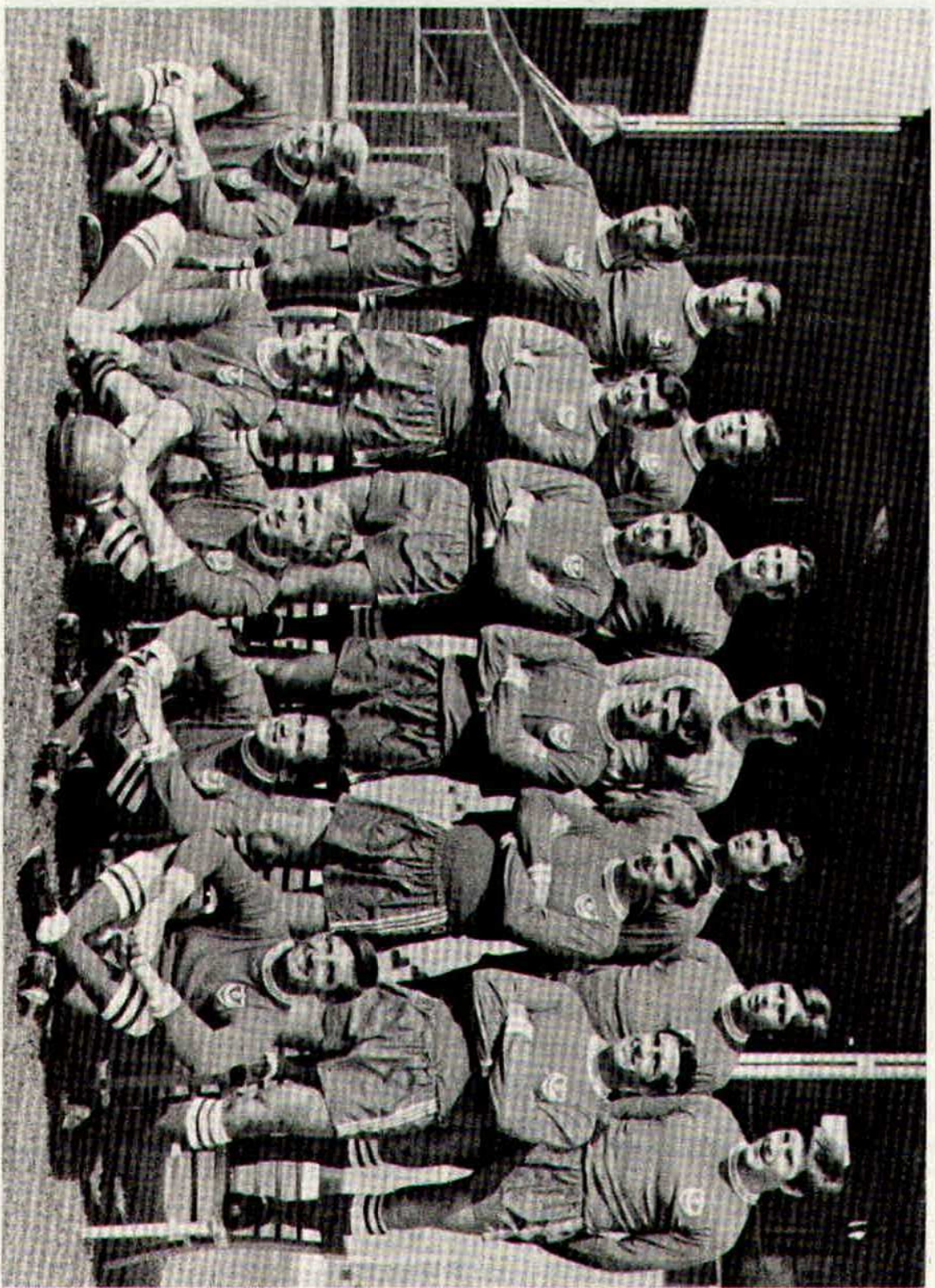
**4 and 5 MARKET STREET
SWINDON**

Telephone 22017

Specialists—

BIRTHDAY CAKES - WEDDING CAKES
DAIRY CREAM - PASTRIES
BUNS - ROLLS - SPONGES





PORTSMOUTH F.C.

Back Row (L to R)

- Mike Travers
- Roger Davidson
- Ray Potter
- John Milkins
- Brian Bromley
- George Ley

Middle Row (L to R)

- Bill Atkins
- Eoin Hand
- Ray Hiron
- Tommy Youlden
- Brian Turner
- Harry Harris

Front Row (L to R)

- Ray Pointer
- Nick Jennings
- Albert McCann
- Mike Trebilcock
- Ron Tindall

HARRY LUNN

(Ex NOTTS COUNTY, PORTSMOUTH and SWINDON TOWN F.C.)

Fish Bar and Restaurant
27-28 COMMERCIAL ROAD SWINDON

RESTAURANT open 9 a.m. to 10 p.m. for

Snacks - Lunches - High Teas - Evening Meal

FISH BAR open Mid-day and Evenings until 11 p.m.

HULFORD MOTORS LIMITED

SELF DRIVE HIRE

Fleet of 1969/8 Fords Escorts De-Luxe
Cortinas De-Luxe Cortinas 1600 Estate
(Bench Seat Column Change) — Zephyr V4s

SHRIVENHAM ROAD

(200 yards from Football Ground)

Telephone 4934

Large Car Park Available

COWLEY BROS. (Wroughton) LTD.

BUILDERS OF MODERN ATTRACTIVE
HOUSES and BUNGALOWS

Developments at

SWINDON

WROUGHTON

BADBURY

Office

28 NEWPORT STREET
SWINDON

Telephone Swindon 6870

Reserved for British Rail



Inter-City

Previous Matches

F.A. CUP (6th Round)

SATURDAY, 21st FEBRUARY, 1970

Lost to Leeds United (home) 2—0.

Team: Downsborough; Thomas, Trollope; Butler, Burrows, Harland; Smith, Smart, Horsfield, Noble, Rogers. Sub. Jones.

Attendance: 27,500.

Referee: Mr. K. E. Walker (Maidstone).

FOOTBALL COMBINATION

TUESDAY, 24th FEBRUARY, 1970

Beat Northampton Town (away) 4—1.

Team: Jones; Dawson, Claypole; Desmeules, Blick, Bailey; Heath, Penman, Down, Dangerfield, Porter. Sub. Handrick.

Scorers: Dangerfield (2), Porter, Handrick.

Referee: Mr. D. N. Harwood (Nottingham).

HELLENIC LEAGUE

SATURDAY, 21st FEBRUARY, 1970

Drew with Pinehurst (away) 1—1.

Team: Grzadkowski; Allen, Claypole; Desmeules, Grubb, Dakin; Moss, Ackling, Bailey, Dangerfield, Porter.

Scorer: Porter.



Going by Car?

HUDDERSFIELD TOWN

Saturday, 7th March, 1970

SWINDON to HUDDERSFIELD . . .

Leave Swindon by the A361 via Highworth, Burford and Chipping Norton to **Banbury**. **44 miles**

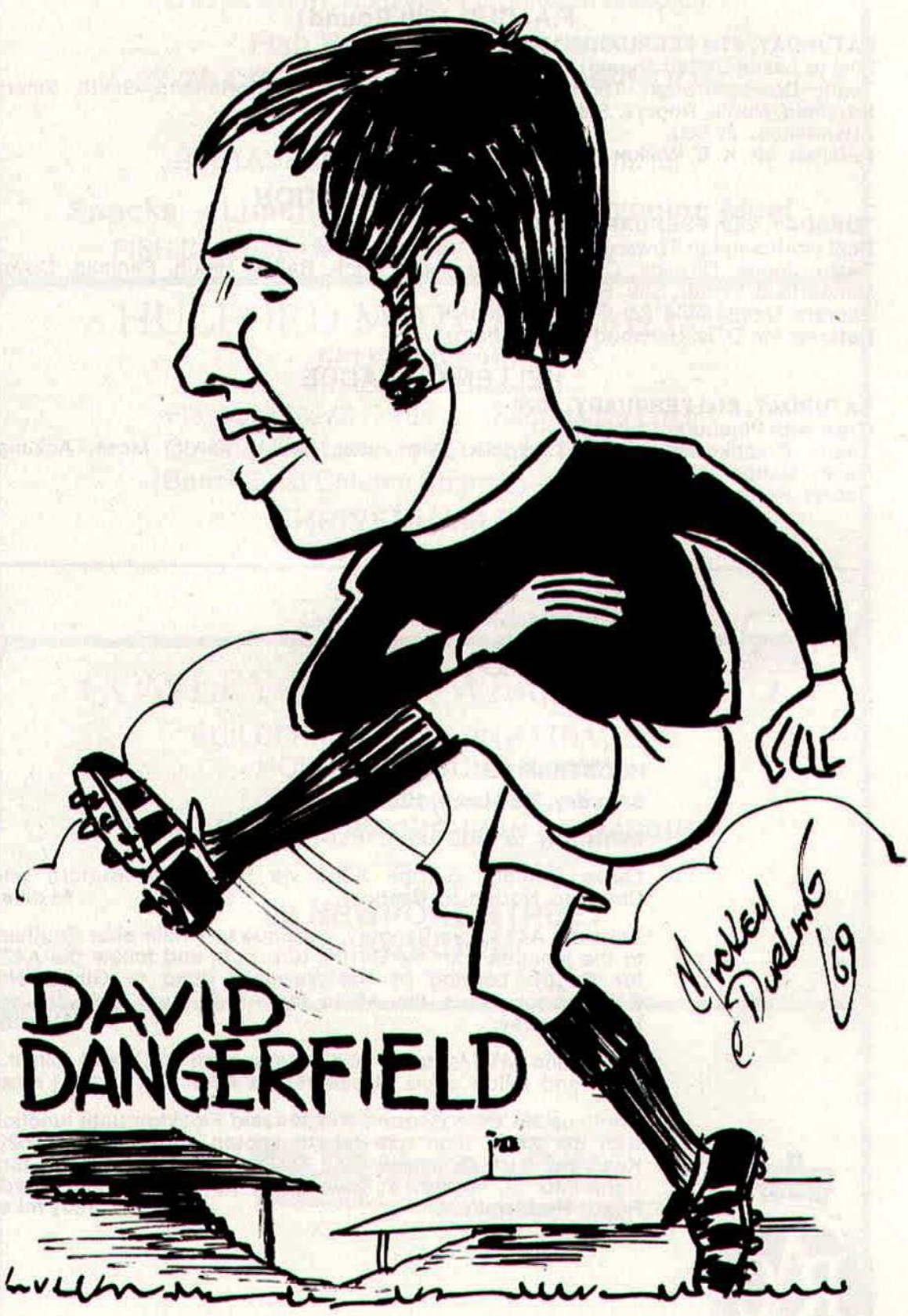
Take the A423 from Banbury, continue to $\frac{3}{4}$ mile after Southam to the junction with the B4100, turn right and follow the A426 for Rugby. Leaving by the Newbold Road to Gibbet Hill Roundabout, cross the A5 to the A4114, turn right for the **M1 Motorway**. **76½ miles**

Follow the M1 Motorway until Intersection (38) and join the A637 and follow signs "**Huddersfield A637**". **169½ miles**

Continue via West Bretton, Midgley and Flockton until junction with the A642, then turn left to Lepton and take the A629. Keep right for Greenside and Moldgreen. At $\frac{1}{4}$ mile on turn right into St. Andrew's Road, then right again into Leeds Road, **Huddersfield**. **180½ miles**



Route kindly supplied by the R.A.C.



**DAVID
DANGERFIELD**

*Arley
Duels
69*

Suppliers to the Swindon Team
MAY WE SUPPLY YOU?



EARLE

of Chippenham Limited

MAIN

FORD

DEALERS

COCKLEBURY ROAD CHIPPENHAM

Telephone 3255

H. HIBBERD LIMITED

FOR YOUR EARTH-MOVING EQUIPMENT

Plant Hire Contractors



40 NEWPORT STREET SWINDON

Telephone Swindon 6125

Football Combination

Fixture List

1969

August

9	Southampton	(H)	2—2
16	Swansea Town	(A)	0—1
23	Queen's Park Rangers	(H)	1—4

September

4	Oxford United	(A)	2—0
6	Bristol City	(H)	1—2
17	Cardiff City	(A)	3—2
20	Arsenal	(H)	1—2
27	Luton Town	(A)	0—2

October

4	Reading	(H)	1—2
7	Bristol Rovers	(A)	P
11	Ipswich Town	(A)	1—0
21	Bristol City	(A)	2—7
25	Crystal Palace	(H)	1—0

November

8	Plymouth Argyle	(H)	3—1
15	Crystal Palace	(H)	1—2
22	Swansea Town	(A)	1—1
29	Tottenham Hotspur	(H)	1—4

December

8	Peterborough United	(A)	0—2
13	Leicester City	(H)	0—2
17	Plymouth Argyle	(A)	1—1
20	West Ham United	(A)	3—1
27	Swansea Town	(H)	0—2

1970

January

27	Arsenal	(A)	0—5
----	---------	-----	-----

February

3	Arsenal	(H)	0—4
10	Bristol Rovers	(H)	P
17	Walsall	(A)	P
24	Northampton	(A)	4—1

March

7	Birmingham City	(H)
11	Crystal Palace	(A)
18	Norwich City	(A)
21	Bristol Rovers	(A)

April

4	Bournemouth & B.A.	(H)
---	--------------------	-----	-------

Name	Appearances		Goalscorers	
	Foot. Comb.	Foot. Comb. Cup	Foot. Comb.	Foot. Comb. Cup
Price	1			
Dawson	8	5		
Fry	14	5		
Desmeules	10	4		
Blick	17	6		
Handrick	16 (1)	7	2	
Heath	5	2		
Penman	12	3	1	
Down	14	5	6	
Dangerfield	15 (1)	6	12	1
Moss	4	1		1
Bailey	12 (2)	6	1	
Grzadowski	2			
Hubbard	15	5		
Jones (R)	12	5		
Allen (K)	8	3		
Jones (C)	4	2		
Wetson	1	1		1
Claypole	11	3		
Porter	3	4	2	1
Allen K. R.	2	2		
Smith		1		1
Boyd		1		

(Playing as substitute in brackets)

AKERS GARAGE LIMITED

THE STREET MOREDON SWINDON WILTSHIRE

Telephone Swindon 3457/8

main dealer for
VAUXHALL/BEDFORD
and
**Parts and Accessories
Sales and Service**

Showrooms open
MONDAY to FRIDAY — 8 a.m. to 8 p.m.
SATURDAY — Closed 7 p.m.
SUNDAYS — 10 a.m. to 2 p.m. for Petrol and Viewing



MODERN LIVING IN EXPERIENCED HANDS

Wilson homes are the result of over 60 years experience in house building. The Company Architect and his design team are always researching into the ever changing requirements of home buyers, to give them better designed homes, which are easy to run, easy to maintain and comfortable to live in.



N.H.B.R.C.

All our houses and bungalows are built to the stringent specification of the National House Builders Registration Council who will guarantee your home for 10 years.

Visit a Wilson Show Home and you will see for yourself why Wilson's have such a reputation in giving value for money.

WILSON

(Swindon) LTD., 90-92 Commercial Road, Swindon Telephone 6361 (3 lines)

seating manufacturers for Stadium Seats Ltd

- * Heavy, medium and light steel fabrication
- * Custom made production line equipment
- * Ancillary work for industry and the building trade

FAST EFFICIENT SERVICE BY



MARTYN LYNSHAW LTD

BOUNDARY WORKS - STRATTON ROAD - SWINDON - WILTS

Telephone 21844

spectator seating in high density polyethylene

- * Supplied to over 36 Football League clubs
- * Any colour. No maintenance
- * Industrial seats for the food, electronics and pharmaceutical industries
- * Largest supplier of spectator and industrial seating in Europe

STADIUM SEATS LTD

STRATTON ROAD - SWINDON - WILTS Telephone 21844